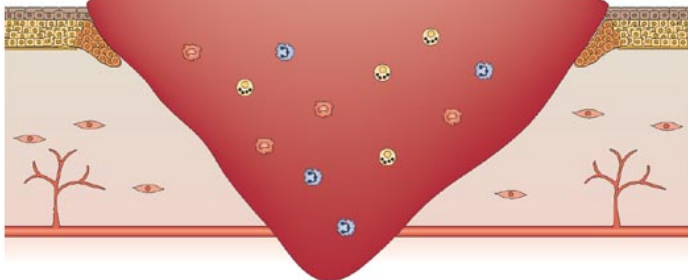
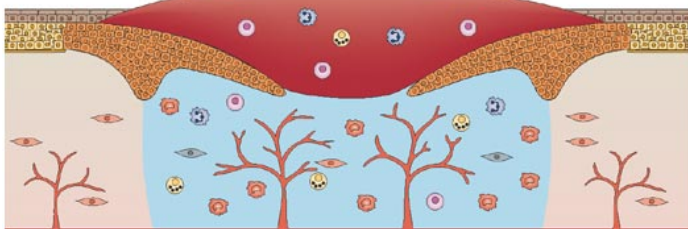


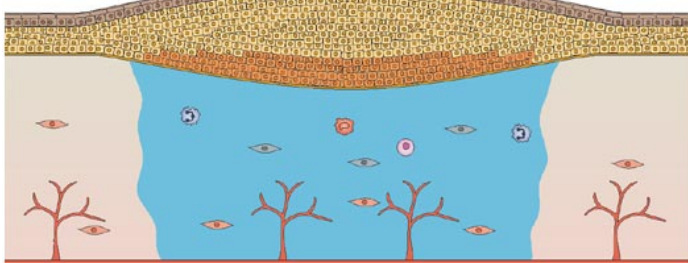
a Wound at days 1–3



b Wound at days 3–10



c Wound at days 7–14



- | | | | |
|--|------------|------------------------------------|------------------------------|
| Keratinocyte | Mast cell | Fibrin clot/scab | Myofibroblast |
| Migrating or hyperproliferative keratinocyte | Macrophage | Blood vessel | Fibroblast |
| | Neutrophil | Granulation tissue | Differentiating keratinocyte |
| | Lymphocyte | Late granulation tissue/early scar | |